



KERNLOCHBOHRER[®]
.COM



Operating instructions

Water tank WT-10/H-PRO



KERNLOCHBOHRER[®]
.COM

Geigersbühlweg 52
72663 Großbottlingen
Tel. 07022-5034900
E-Mail: info@kernlochbohrer.com

Version 0 2. Output 08/2021

Content

Introduction	3
About this guide	3
Note	3
Explanation of symbols	4
Safety regulations	4
Using the water tank	5
Maintenance and care	6
Transport	6
Cleaning and storage	6
Technical data	7
Environmental protection	7
Warranty	7
Exploded view	8

Introduction

Thank you for choosing the WT-10/H-PRO water tank from Kernlochbohrer.com. This is a high quality product based on the latest technology. We hope that this device is to your satisfaction and meets your expectations. We are constantly striving to improve our products in our product segment and will continue to supply the market with new equipment.

Our company declines all responsibility in the event of violations of the operating instructions that may lead to injuries or machine damage. In addition, all currently applicable regulations of the Accident Prevention Regulations (UVV) and the Employer's Liability Insurance Association (BG) must be observed.

About this guide

These operating instructions are for the model
WT-10/H-PRO

Check the machine model against the type plate.



Note

Read the entire instruction manual carefully before using the water tank. Special attention should be paid to the section "Safety precautions".

Kernlochbohrer.com reserves the right to change the design and appearance of the products and their operating instructions. Future changes to the operating instructions will be made without prior notice.

Explanation of symbols



Warning of general danger. Failure to comply with these safety precautions and instructions may result in electric shock, fire and/or serious injury.

Safety regulations

- ❖ Read all precautions before commissioning and keep the operating instructions.
- ❖ Please follow the operating instructions carefully, as failure to observe these safety precautions and instructions may cause electric shock and/or serious injury.

1. Do not use this tank to store flammable chemicals.
2. Always place the water tank on a flat, level floor and ensure that a strainer is used when filling.
3. Richten Sie den Tankschlauch niemals auf eine Person oder ein Tier.
4. This appliance is not intended for use by persons (including children) with reduced physical, sensory or mental capabilities, or lack of experience and/or knowledge, unless they have been given supervision or instruction concerning use of the appliance by a person responsible for their safety. Children should be supervised to ensure that they do not play with the appliance.
5. Do not operate the unit including accessories if: The appliance has visible damage (cracks/breaks) or there is suspicion of an invisible defect (after a fall).

6. No liability is accepted for any damage caused by misuse, improper operation or improper repair.
7. Only use original spare parts and accessories for maintenance and repair.
8. Only use the water tank when you are in full possession of your faculties.

Using the water tank

Place the tank on a level surface when filling.

The water tank can be opened and closed by turning the handle. Always release the pressure before opening.

When the appliance is ready for use. Fill the liquid into the container.

Pressurise the water tank by unlocking the pump plunger by turning the lever on the pump cover, lift the plunger to the "OPEN" position with both hands and push the plunger down. Continue this process with full, even pumping movements. Pump 40-45 times (equivalent to about 3.3bar). As an alternative to pumping by hand, the pressure in the tank can also be generated with a compressor.

Note:

Depressurise the water tank using the vent valve when it is not in use or when you want to empty it.

Maintenance and care

If the pressure decreases, becomes irregular or drops, first release the pressure, then clean the coupling if it is clogged. Do not use wire for this.

If no pressure builds up in the tank, check the pressure relief valve. If necessary, tighten or replace it.

If you notice that the tank is leaking during work, check all seals and the pump mechanism. Depressurise the tank, replace the seal if necessary, close the drain valve and refill the water tank.

Transport

Always transport the tank in an upright position, protect the hose from sharp objects and never transport your tank with harmful chemicals in it.

Cleaning and storage

After use, fill fresh water into the tank and flush the entire system with it by starting up the tank and pumping out all the water through the system.

Keep the tank in a cool place that is inaccessible to children.

If you place the tank in a cold environment, you must discharge all liquids in the tank.

Technical data

Total capacity	13L
Nominal capacity	10L
Working pressure	25-55Psi (1,7-3,3bar)

Environmental protection

Raw material recovery instead of waste disposal!

To avoid transport damage, the unit must be delivered in sturdy packaging. Packaging as well as the unit and accessories are made of recyclable materials.

The plastic parts of the unit are labelled according to the material. This enables environmentally friendly, sorted disposal via the collection facilities offered.

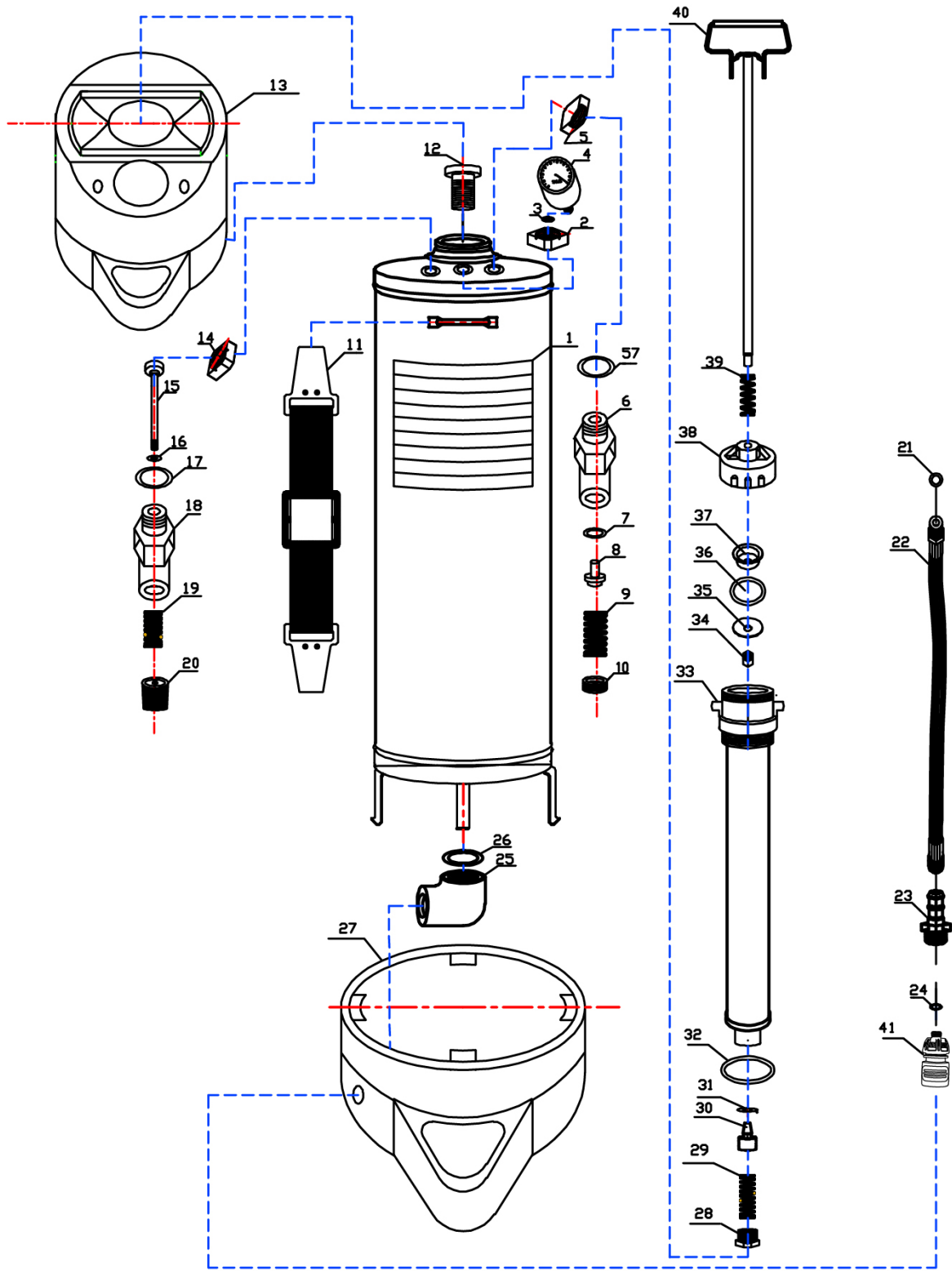
Only for EU countries

Do not throw power tools in the household waste! According to the European Directive 2012/19/EU on waste electrical and electronic equipment and its implementation in national law, used power tools must be collected separately and recycled in an environmentally sound manner.

Warranty

In accordance with our general terms and conditions of delivery, a warranty period of 12 months applies for material defects in business transactions with companies (proof by invoice or delivery note). Damage caused by natural wear and tear, overloading or improper handling shall remain excluded from this. Damage caused by material or manufacturer defects shall be remedied free of charge by repair or replacement. Complaints can only be accepted if the device is sent to the supplier unassembled.

Exploded view



No.	Part designation	Number	No.	Part designation	Number
1	Cap	1	21	Ring $\Phi 14 \times \Phi 1.9$	1
2	Hexagon from	1	22	Hose	1
3	Ring $\Phi 16 \times 12 \times 1.9$	1	23	Hose connector	1
4	Pressure gauge	1	24	Ring $\Phi 14 \times 8 \times 2$	1
5	Hexagonal outside	1	25	Output connector	1
6	Safety valve core	1	26	Ring $\Phi 9 \times \Phi 1.9$	1
7	Flat gasket $\Phi 9 \times \Phi 4 \times 2.4$	1	27	Plastic funnel	1
8	Safety cavity core	1	28	Pump nut	1
9	Spring	1	29	Spring	1
10	Containment lid	1	30	Pump thimble	1
11	Cingulum	1	31	Plan seal $\Phi 7 \times 3 \times 1.8$	1
12	Mother	1	32	Ring $\Phi 48 \times 1.9$	1
13	Plastic funnel	1	33	Screw mouth	1
14	Hexagon nut	1	34	Lock nut	1
15	Relief vessel core	1	35	Copper sheet	1
16	Ring $\Phi 7 \times 1,9$	1	36	Ring $\Phi 38 \times \Phi 3.5$	1
17	Flat gasket $\Phi 15 \times \Phi 12 \times 3$	1	37	Valve seat	1
18	Relief volcano body	1	38	Gas lid	1
19	Spring	1	39	Feder	1
20	Relief valve cap	1	40	Pump handle	1
			41	Gardena connection	1